



FETtec KISS FC

Manual

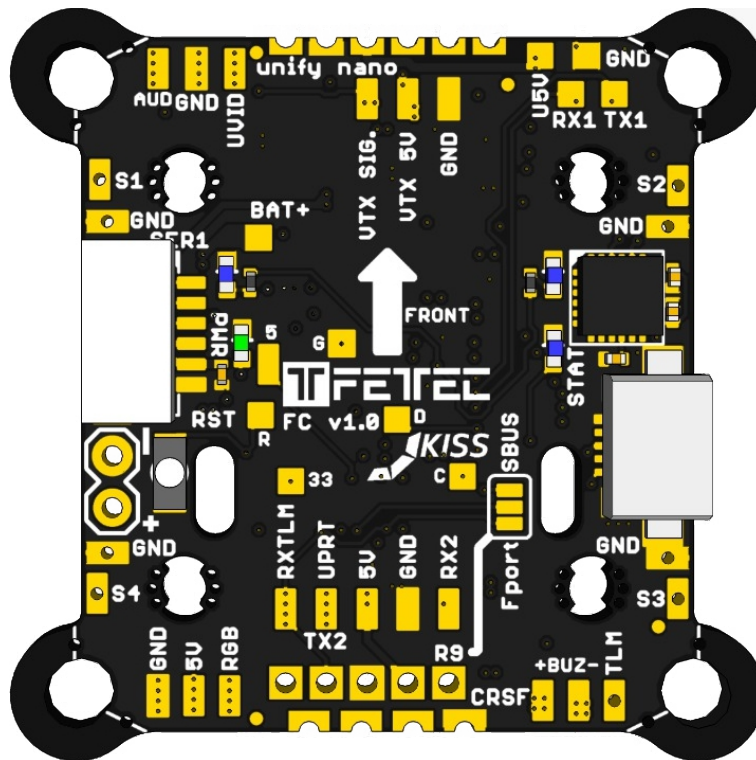


Table of Contents

Introduction.....	3
Features.....	3
Safety warning.....	3
Connection Diagram.....	4
Top/Bottom Layout.....	4
Dimension (in mm).....	5
Basic Setup.....	6
8 pin connection.....	6
Reciever connection (RX).....	7
FrSky R-XSR.....	7
Crossfire nano connection.....	8
VTX connection (unify nano).....	8
Camera connection.....	9
Resetbutton.....	9
KISS Firmware	10
Technical details.....	10

Introduction

Thank you for purchasing the FETtec FC. This is a KISS licensed F7 Flight-controller

Features

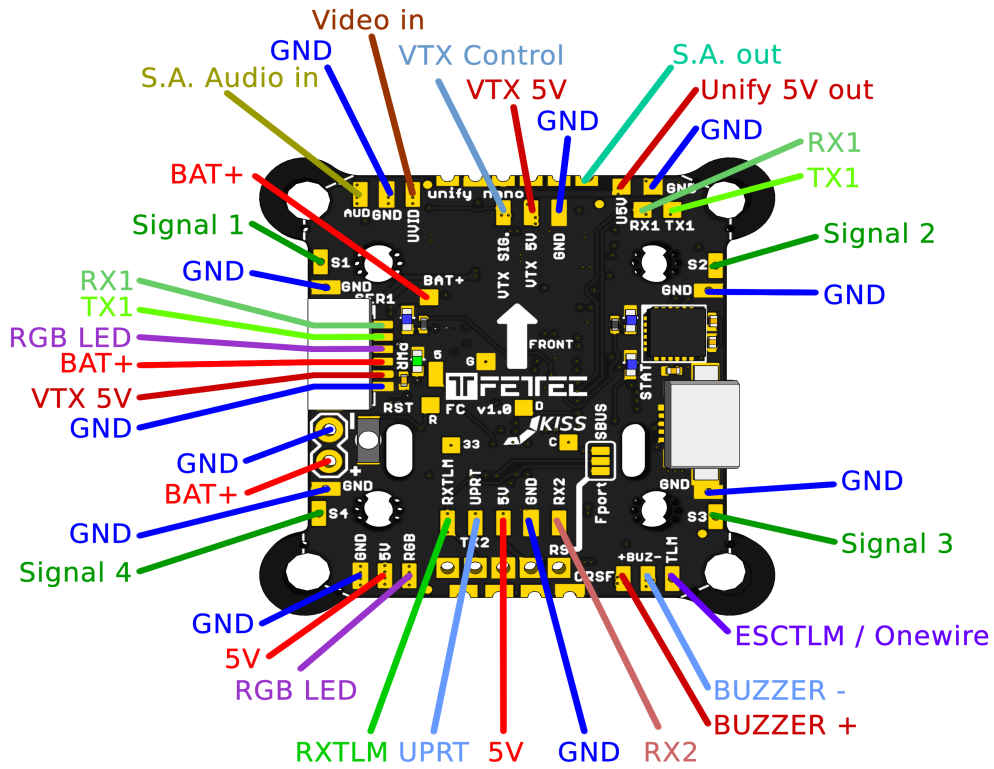
- KISS FC firmware
- 2S-6S Lipo voltage
- Dimensions 35x30mm without 30x30 corners
 - 20x20mm (with breakable holes M2 to M3)
 - 30x30mm hole distance useable (breakable 30x30mm corners)
- F7 Processor [DShot 2400, Oneshot, Onewire]
- Direct places for RX and VTX (unify nano, CRSF nano, FrSky R9)
- Build-in real Pit-Mode for unify nano (via VTX Pin and 5V on SER1)
- Dedicated onboard 5V BEC for VTX (max 600mA)
- Motor Signal and GND pads in each corner
- 8 pin connector for solder free FETtec ESC connection

Safety warning

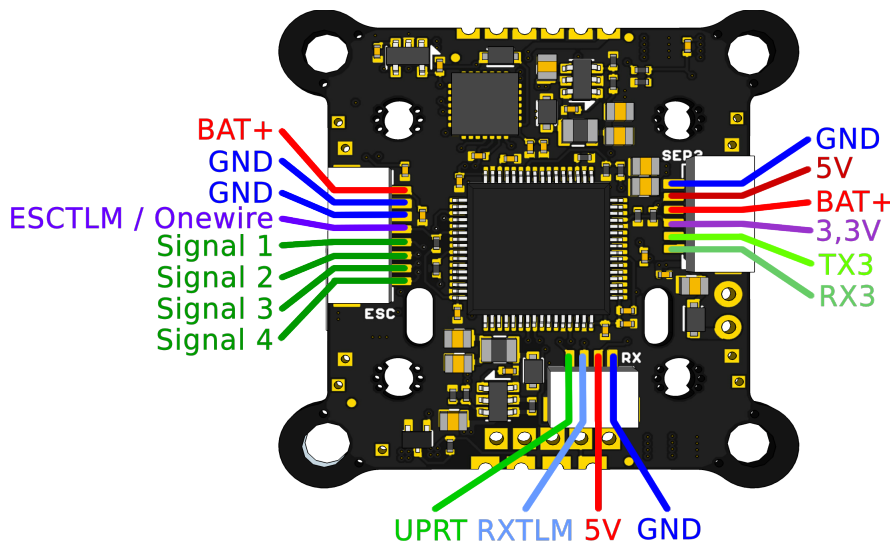
- Remove propeller before flashing and configuration

Connection Diagram

Top/Bottom Layout

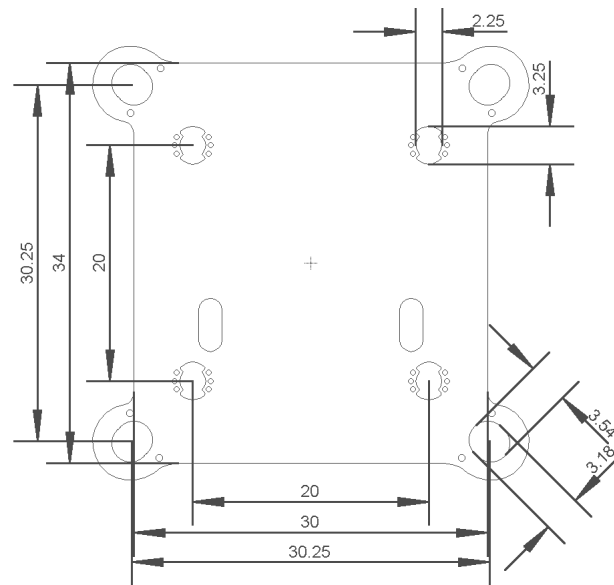


- Signal1-4 – Motor Signal 1-4
- ESCTLM – Telemetry (Serial)
- GND – Reference Signal Ground
- UPRT – Receiver signal port (SBUS / F-Port / PPM / Crossfire TX)
- RXTLM – Receiver telemetry (sPort / Crossfire RX)



Serial connectors (SER1&SER3) are JST-SH-1mm 6-pin

Dimension (in mm)



Dimensions 35x30mm without 30x30mm corners

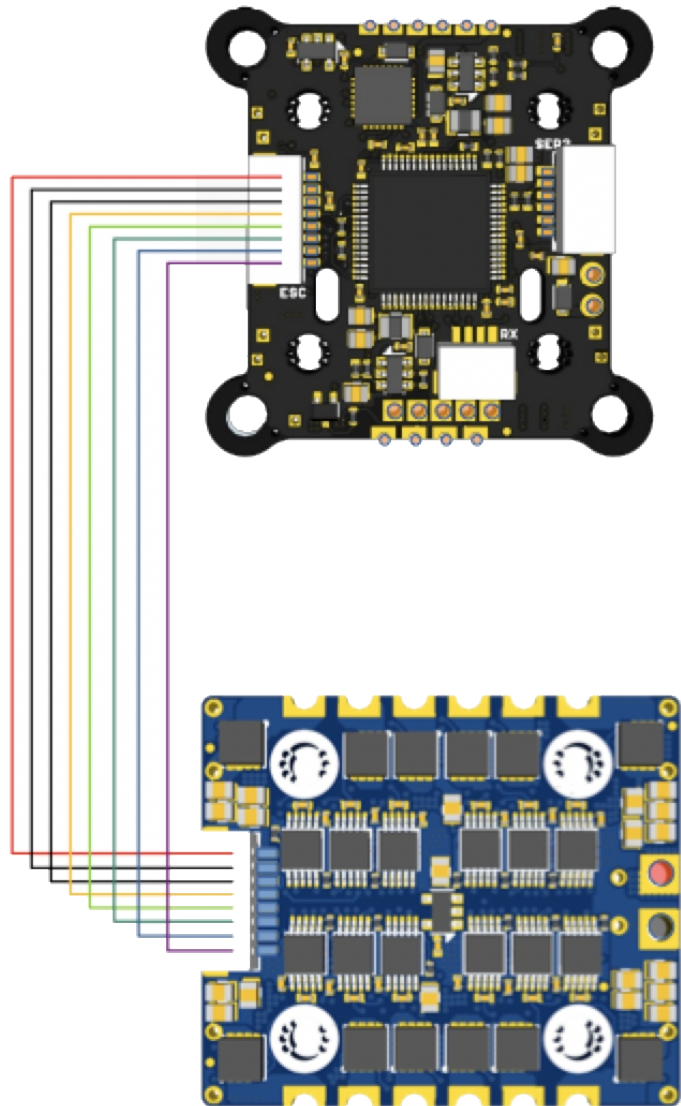
- 20x20mm (with breakable holes M2 to M3)
- 30x30mm hole distance useable (breakable 30x30mm corners)

Basic Setup

8 pin connection

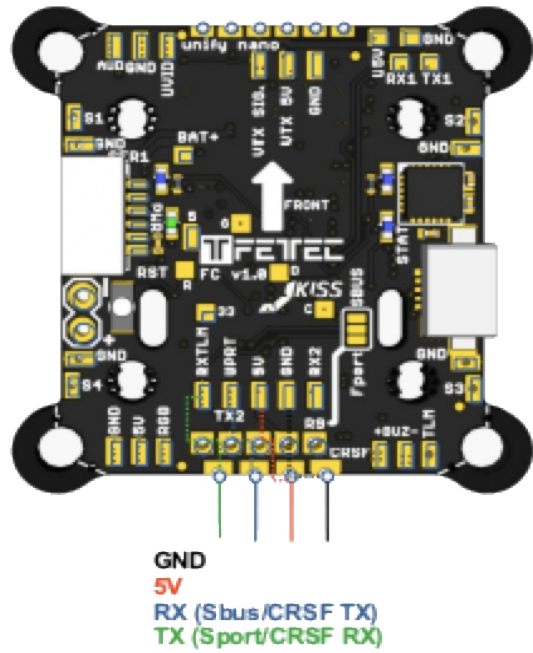
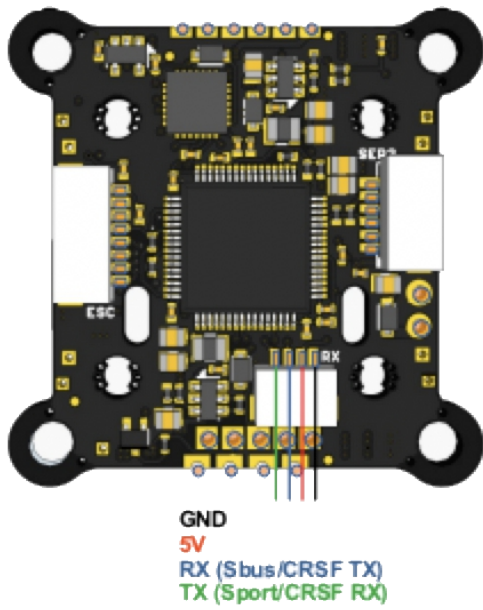
(JST-SH-1mm 8-pin)

FETtec KISS FC to FETtec ESC
(cable included by FETtec ESC)

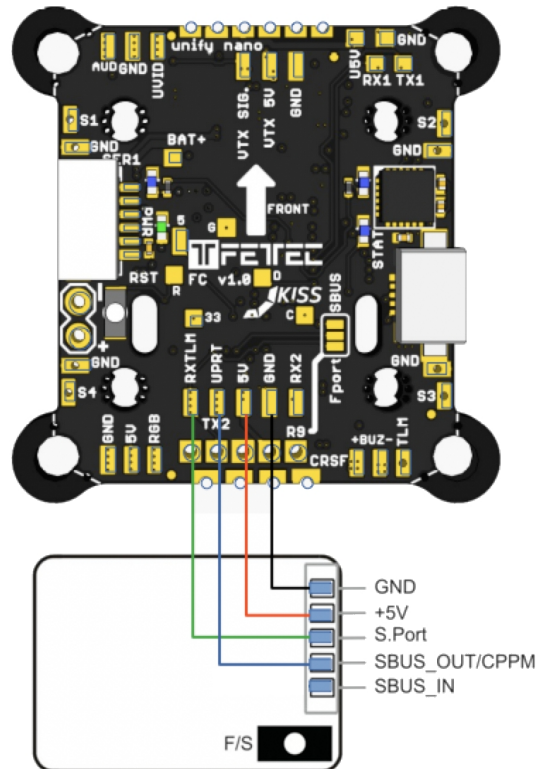
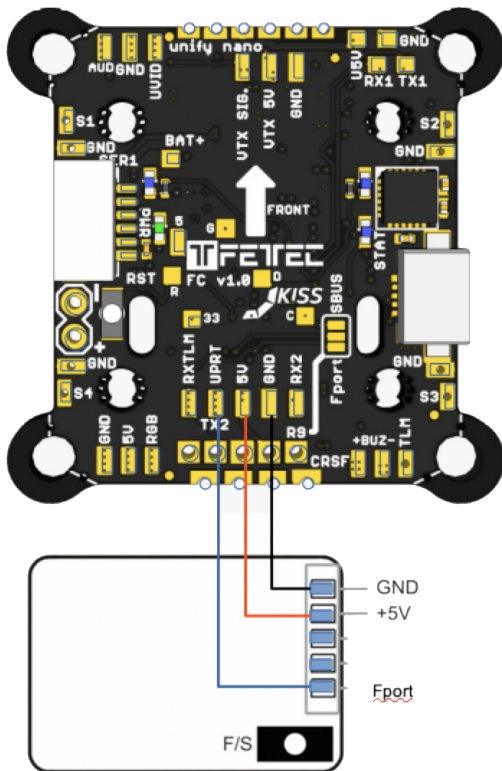


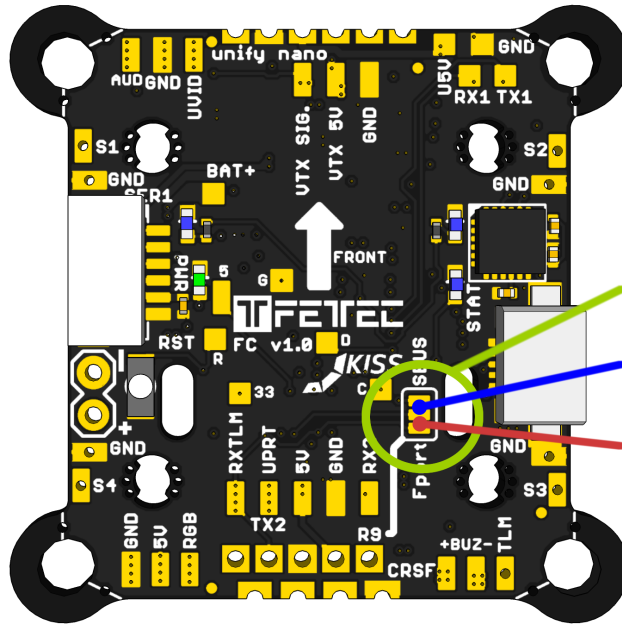
Receiver connection (RX)

Top&Bottom connectors for receivers (bottom connector JST-SH-1mm 4-pin)



FrSky R-XSR





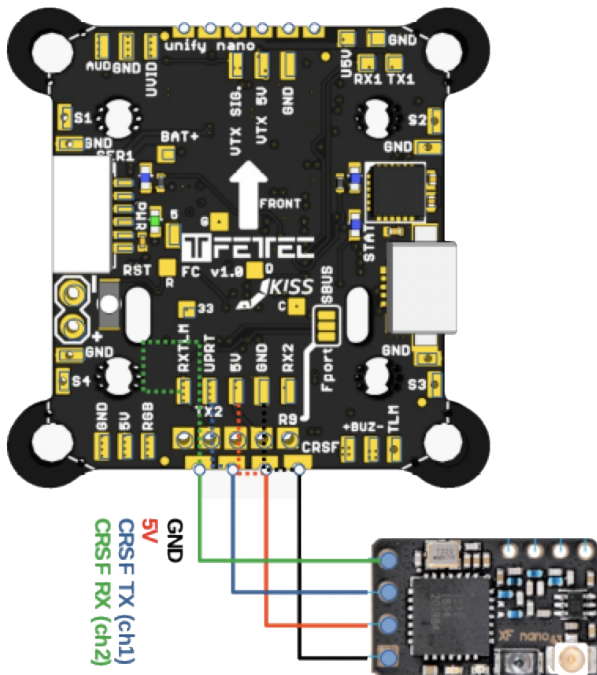
R9 Signal usage Solder jumper. Bridge only one!

Bridge for S-Bus use

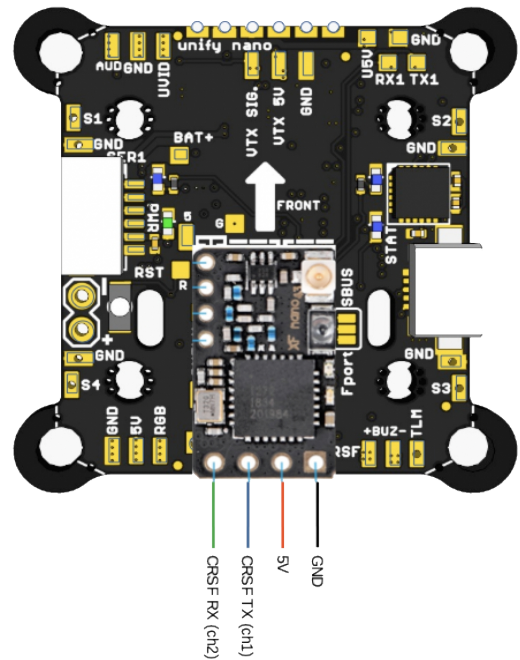
Bridge for F-Port use

Crossfire nano connection

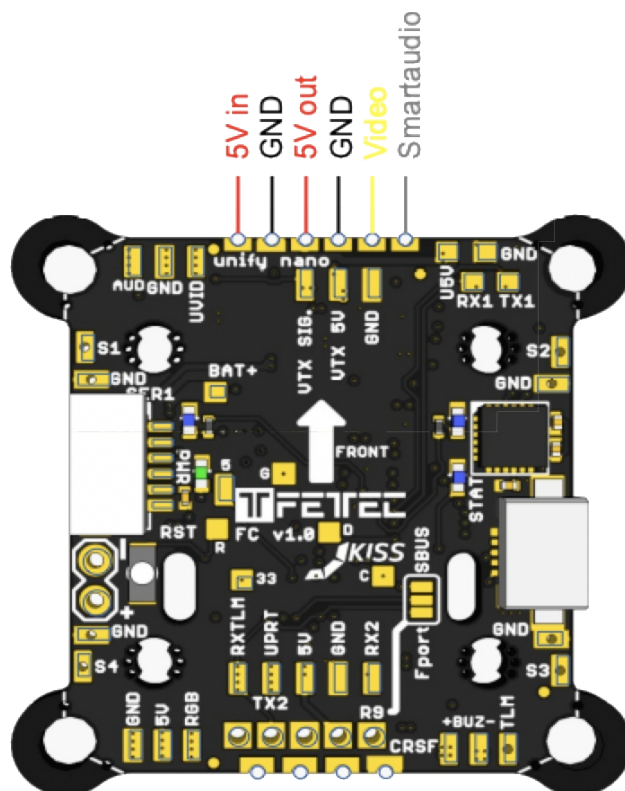
cable connection



2,54mm pinheader connection



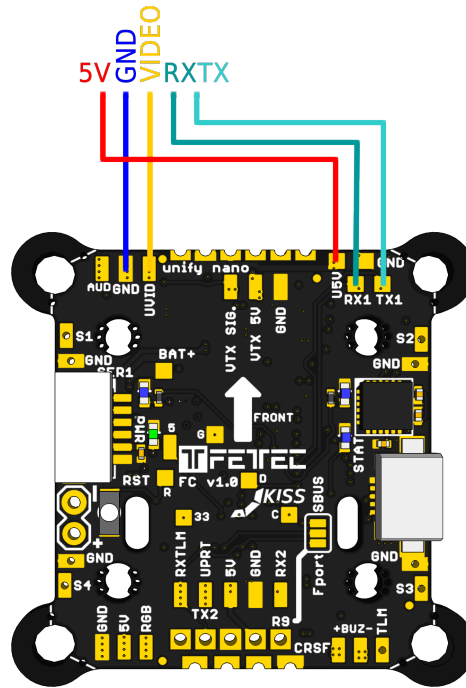
VTX connection (unify nano)



Camera connection

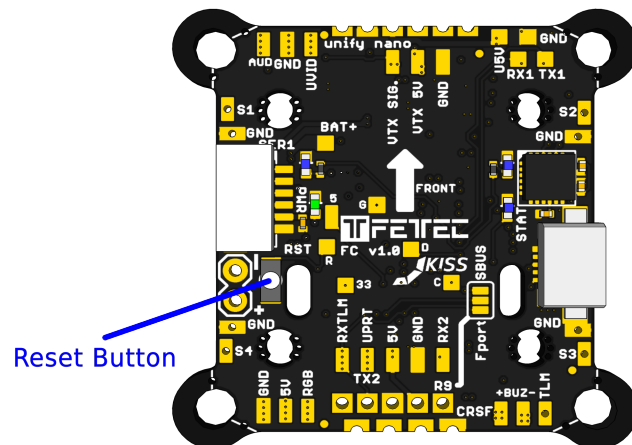
Notes:

- RX and TX connection is only for cameras that support serial
- 5V (U5V) and Video (UVID) are only for use with a mounted unify PRO nano or unify PRO nano 32



Resetbutton

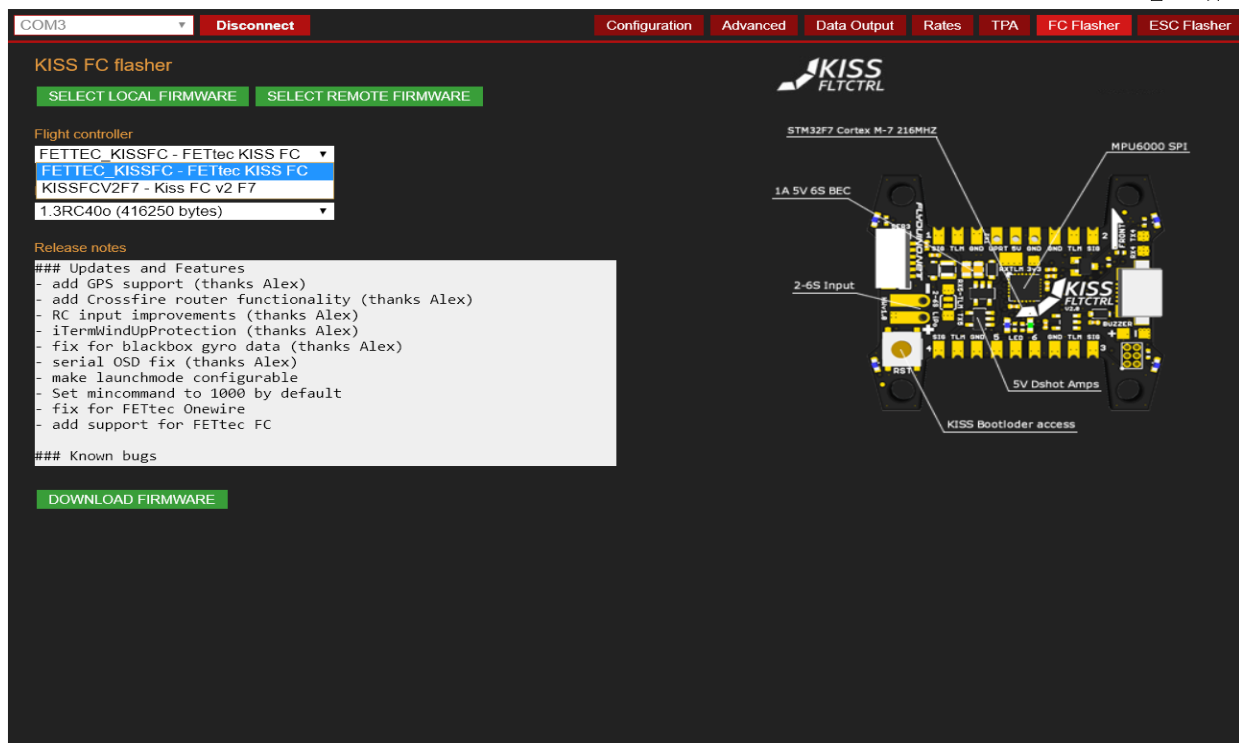
Resets the FC to the preflashed bootloader



KISS Firmware

For the latest KISS FC firmware and GUI please visit <https://github.com/flyduino>

To update the FETtec FC firmware please use the KISS GUI and choose FETTEC KISS FC



Technical details

- STM32F7RET6 @ 216MHz
- MPU6000
- Supply voltage 6-27V (2-6S LiPo)
- 2x 5V BEC's (1x VTX with realpit, 1x all others)
both max 600mA